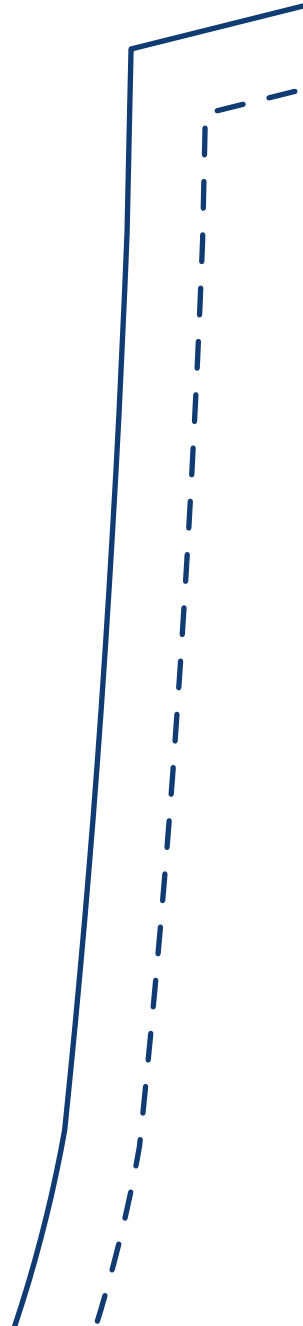
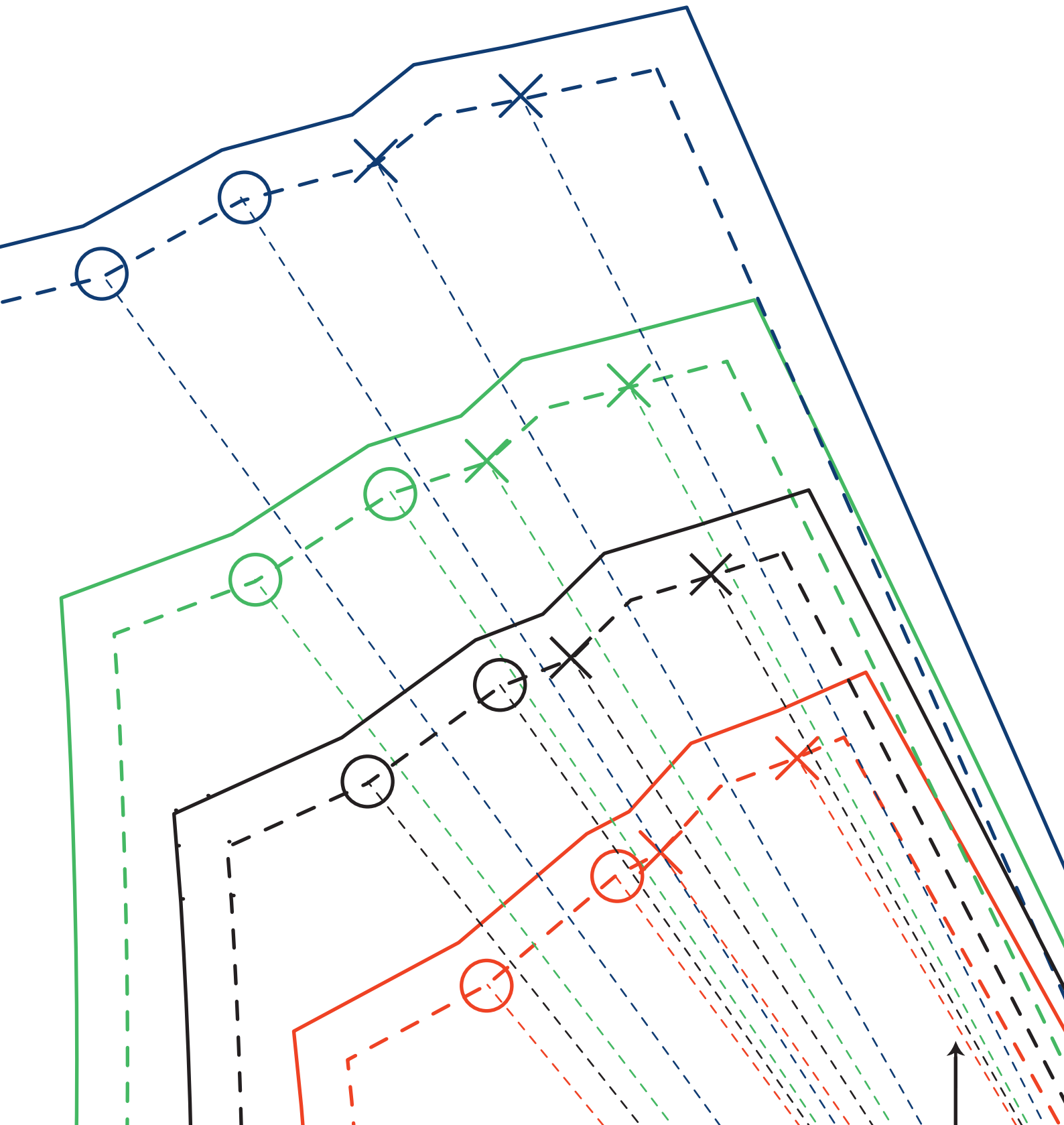


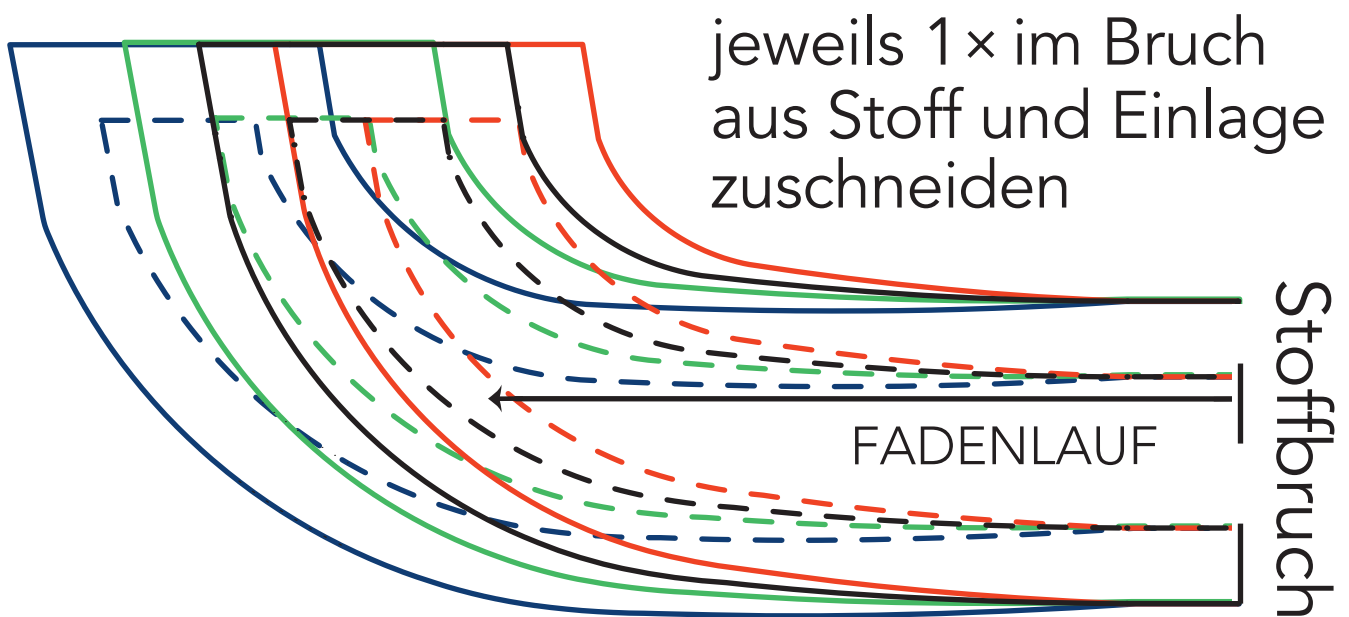
| Masstabelle | 32-34 | 36-38 | 40-42 | 44-46 |
|-------------|-----------|----------|----------|----------|
| Grösse: | XS | S | M | L |
| Oberweite: | 84-91 | 92-99 | 100-109 | 110-121 |
| Taille: | 66-73 | 74-81 | 82-91 | 92-103 |
| Hüfte: | 91-97 | 98-104 | 105-113 | 114-124 |

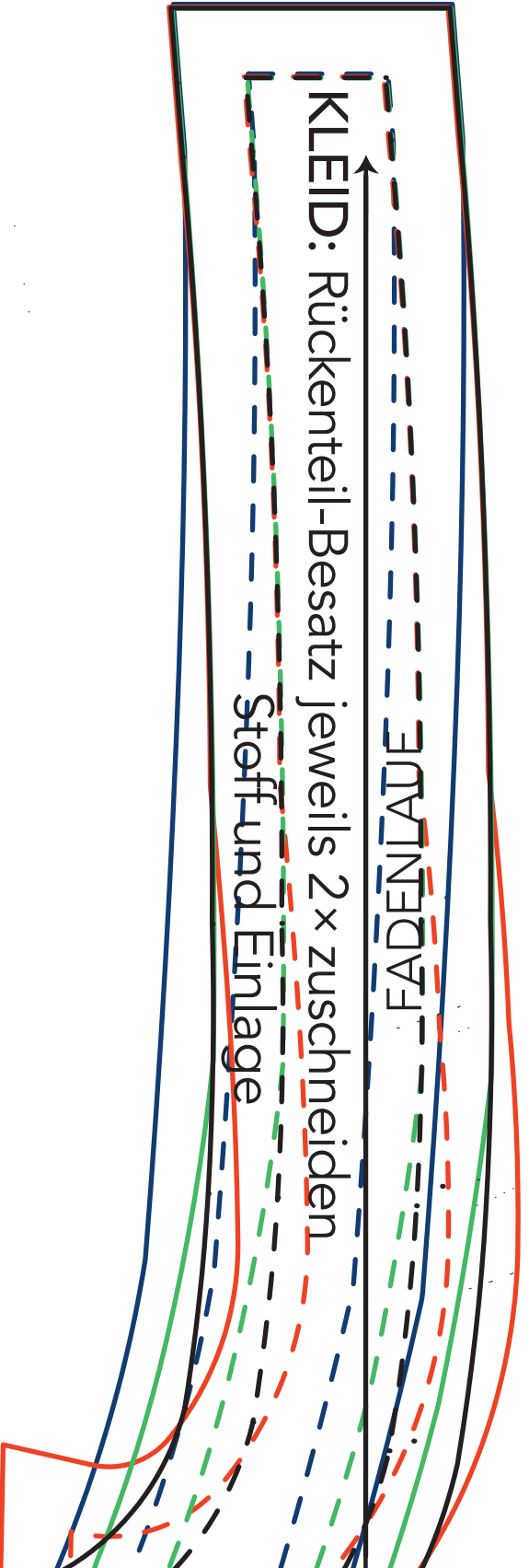




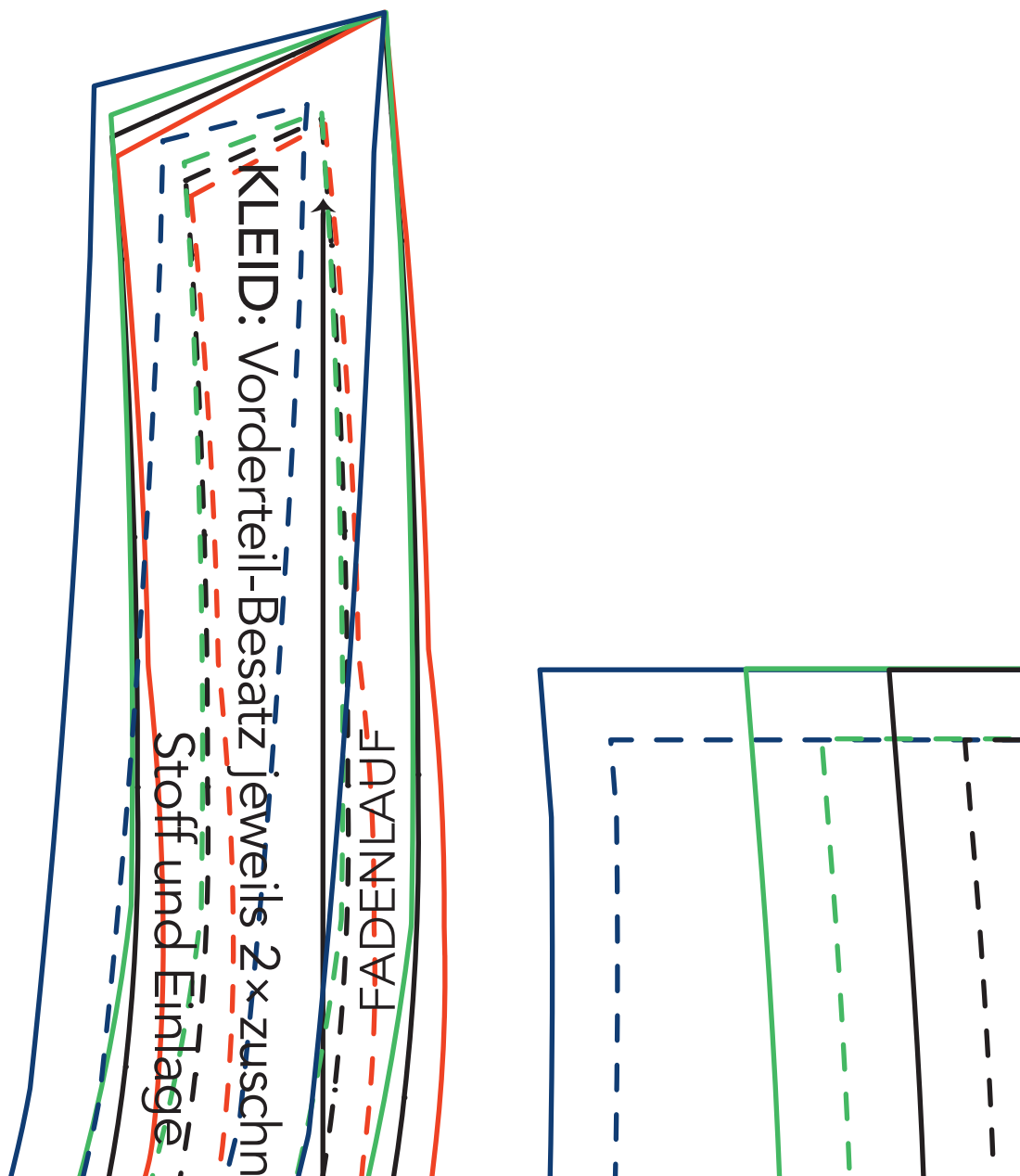
Die Nahtzugaben sind im Schnitt enthalten!

KLEID: Rückenteil-Besatz

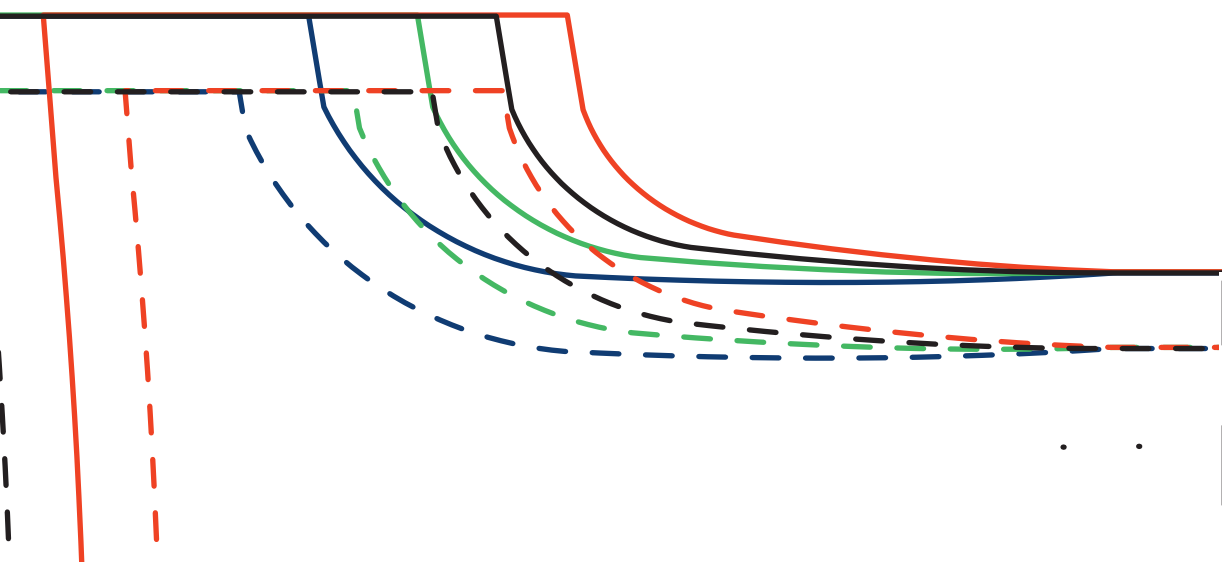


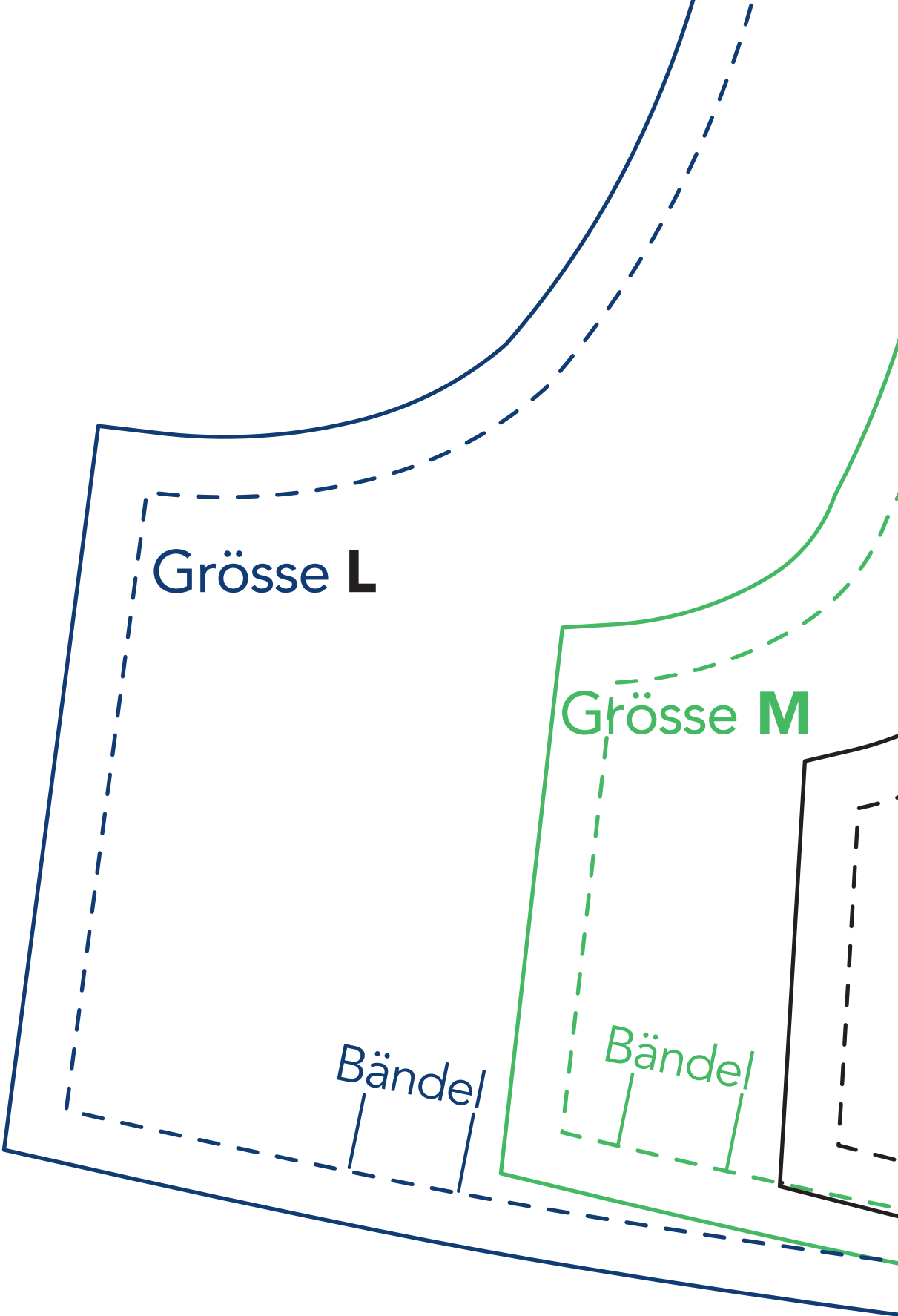


Das Quadrat sollte nach dem Ausdrucken 3 x 3 cm gross sein!



Schweizer LandLiebe





8

KLEID: Vorderteil oben
2 × zuschneiden

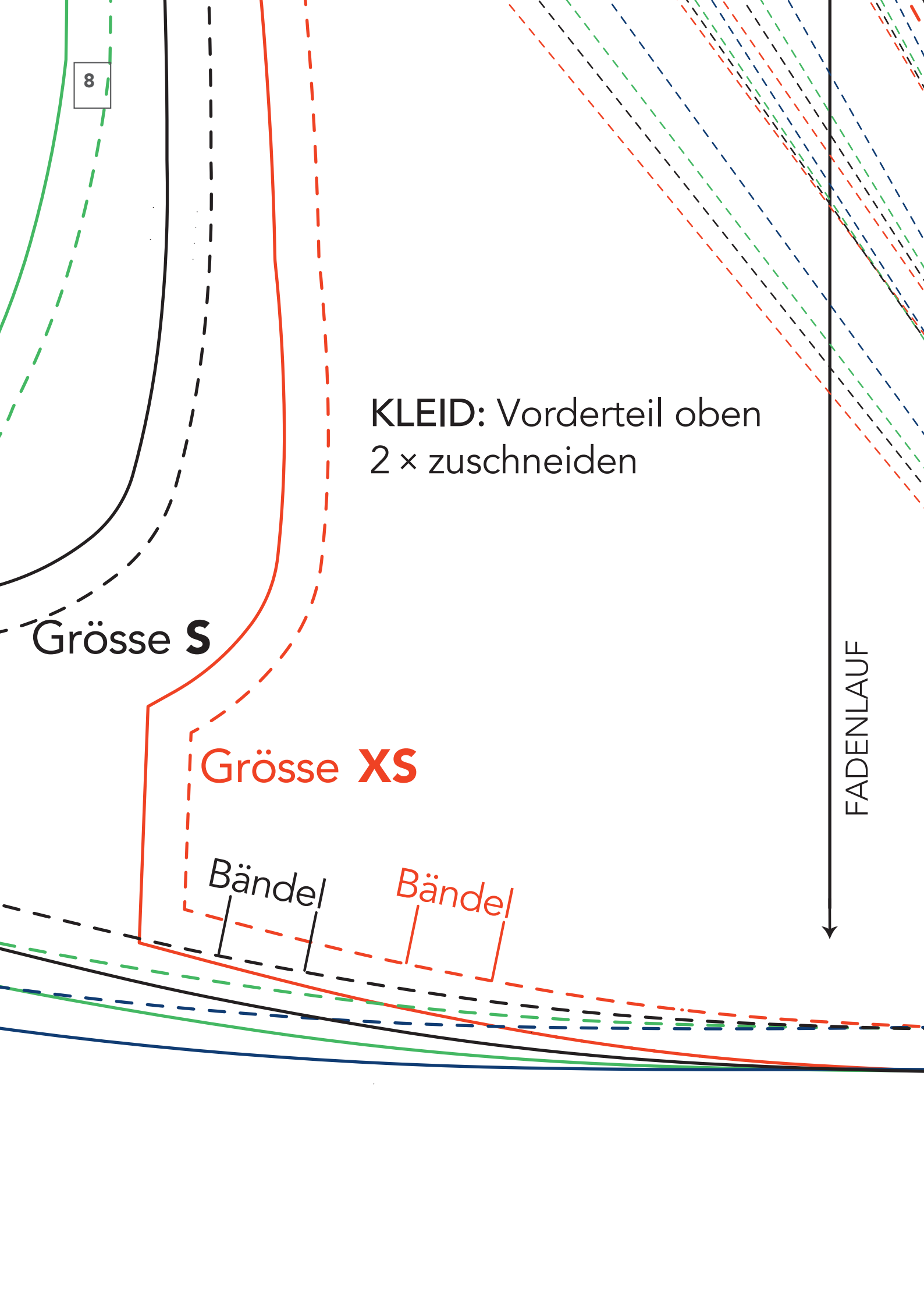
Grösse **S**

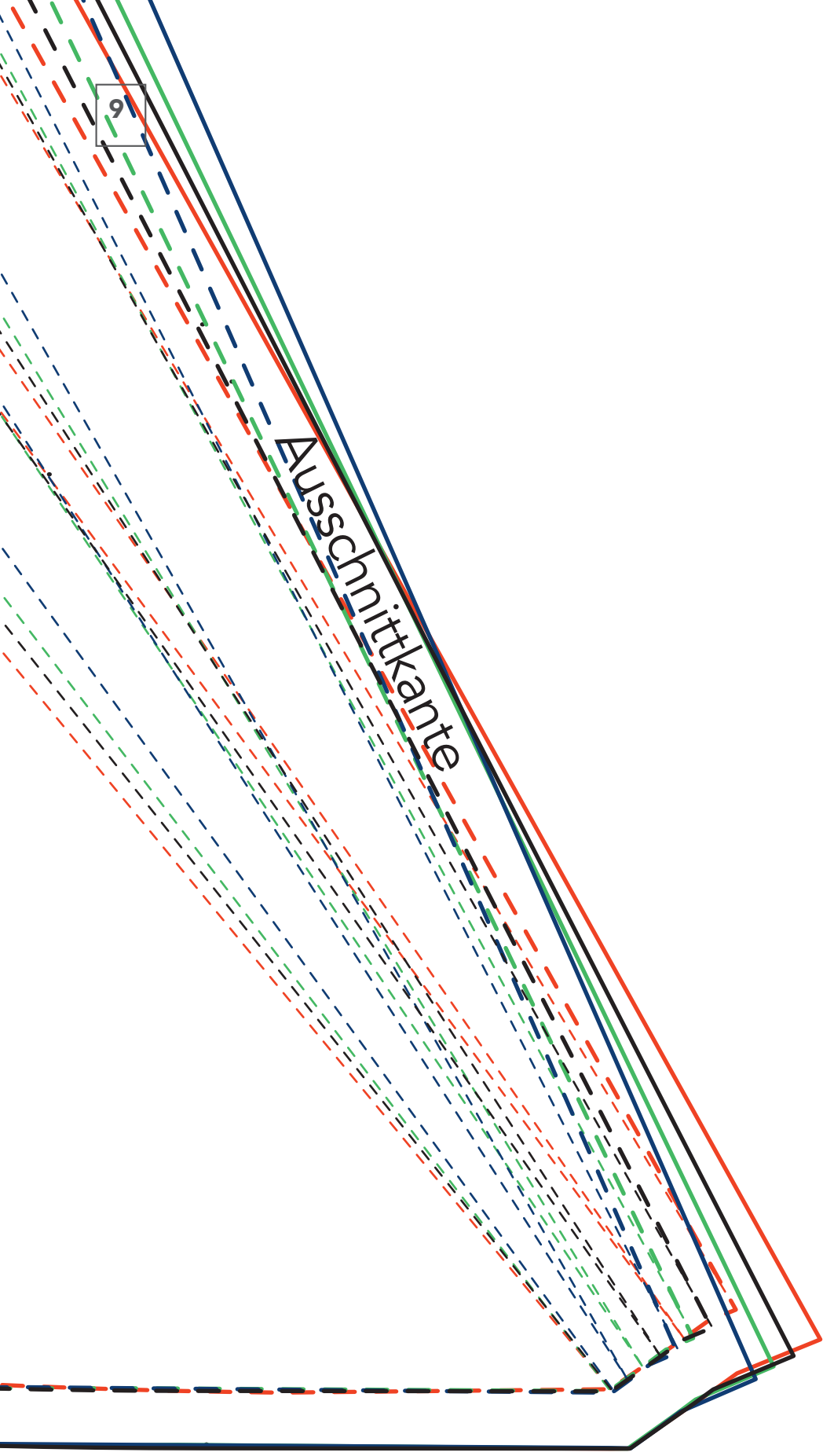
Grösse **XS**

Bündel

Bündel

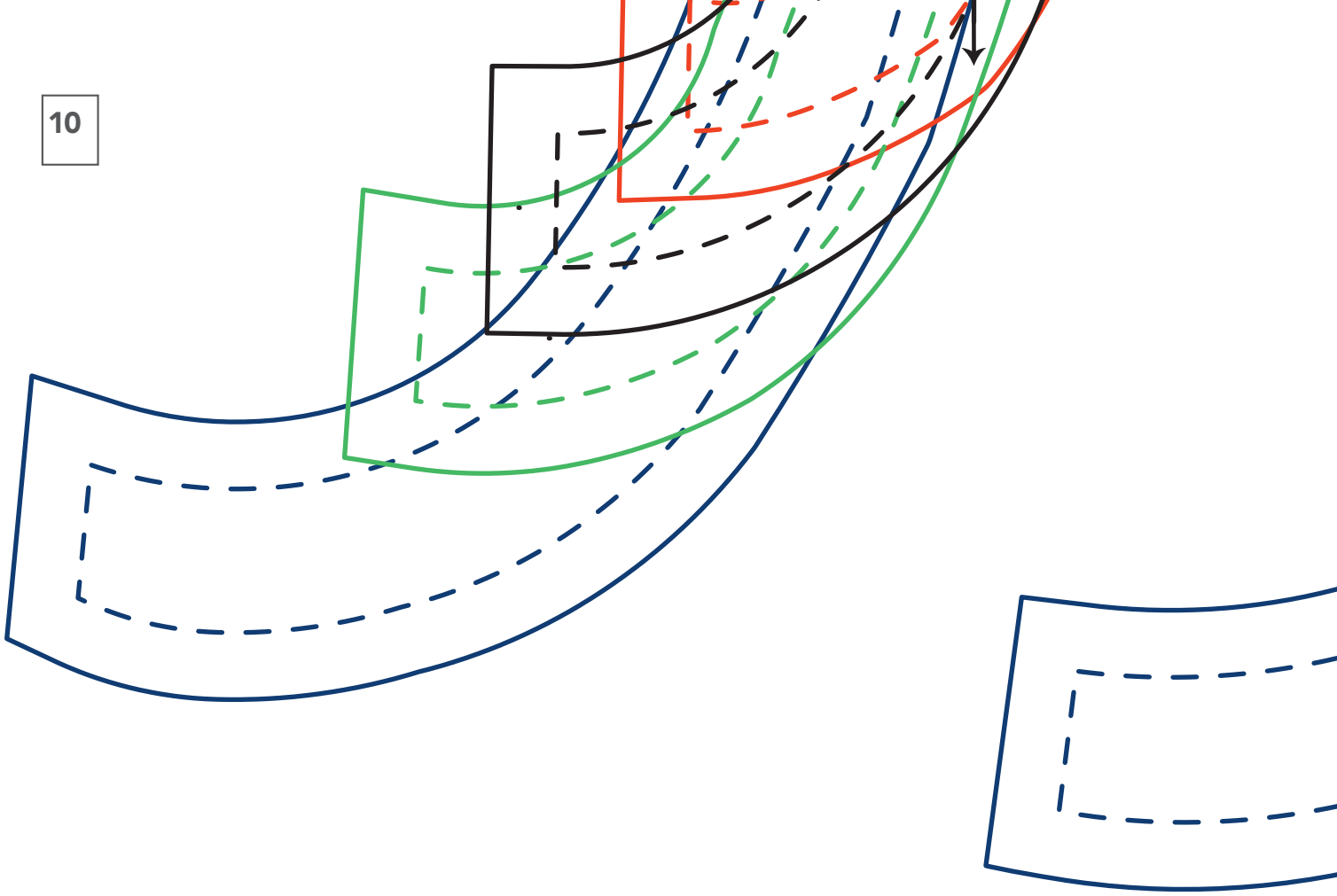
FADENLAUF



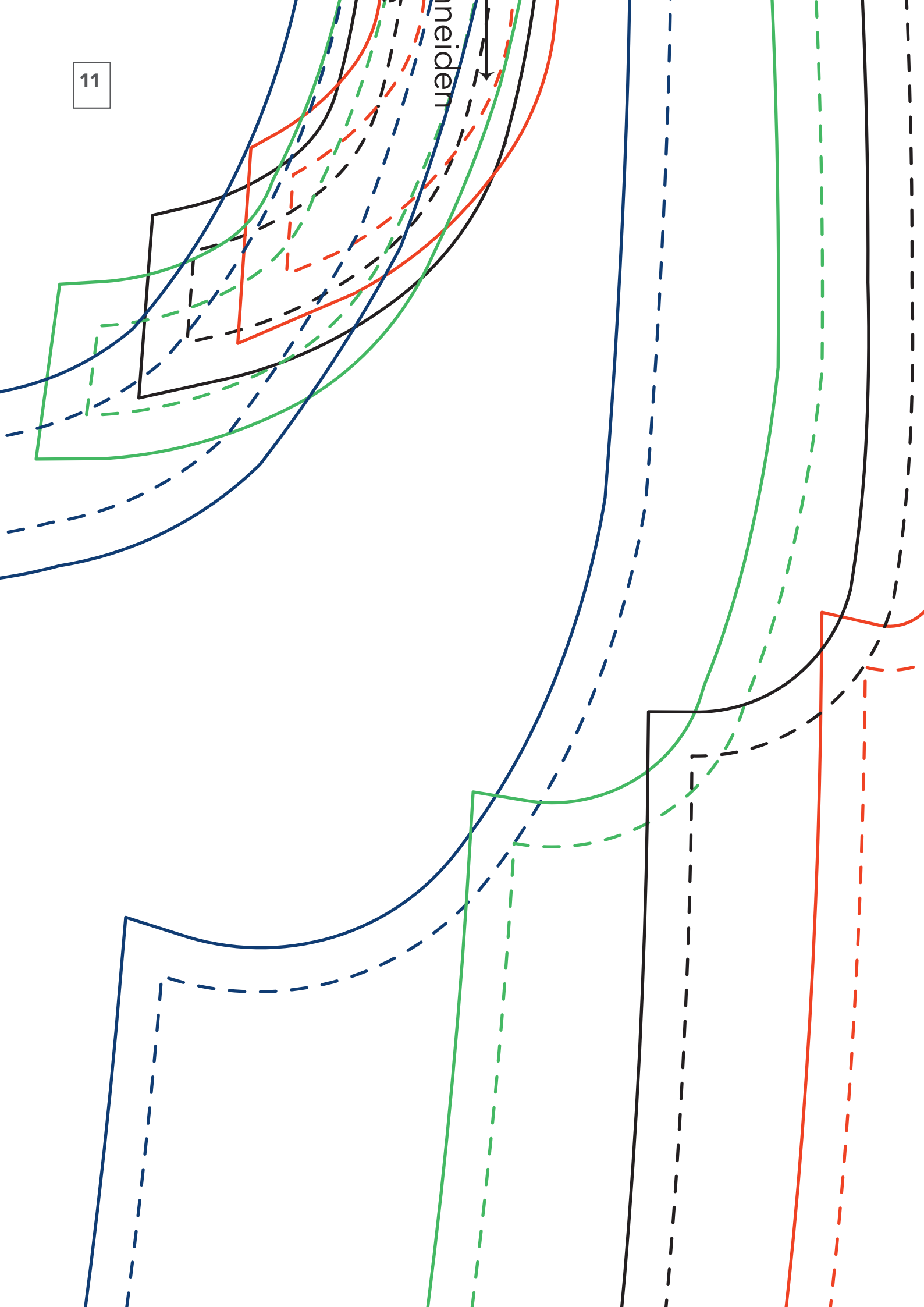


9

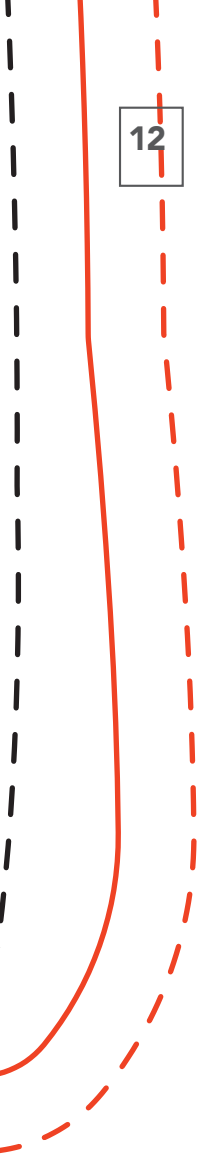
Ausschnittkante



neiden



12



• •
• •



• •

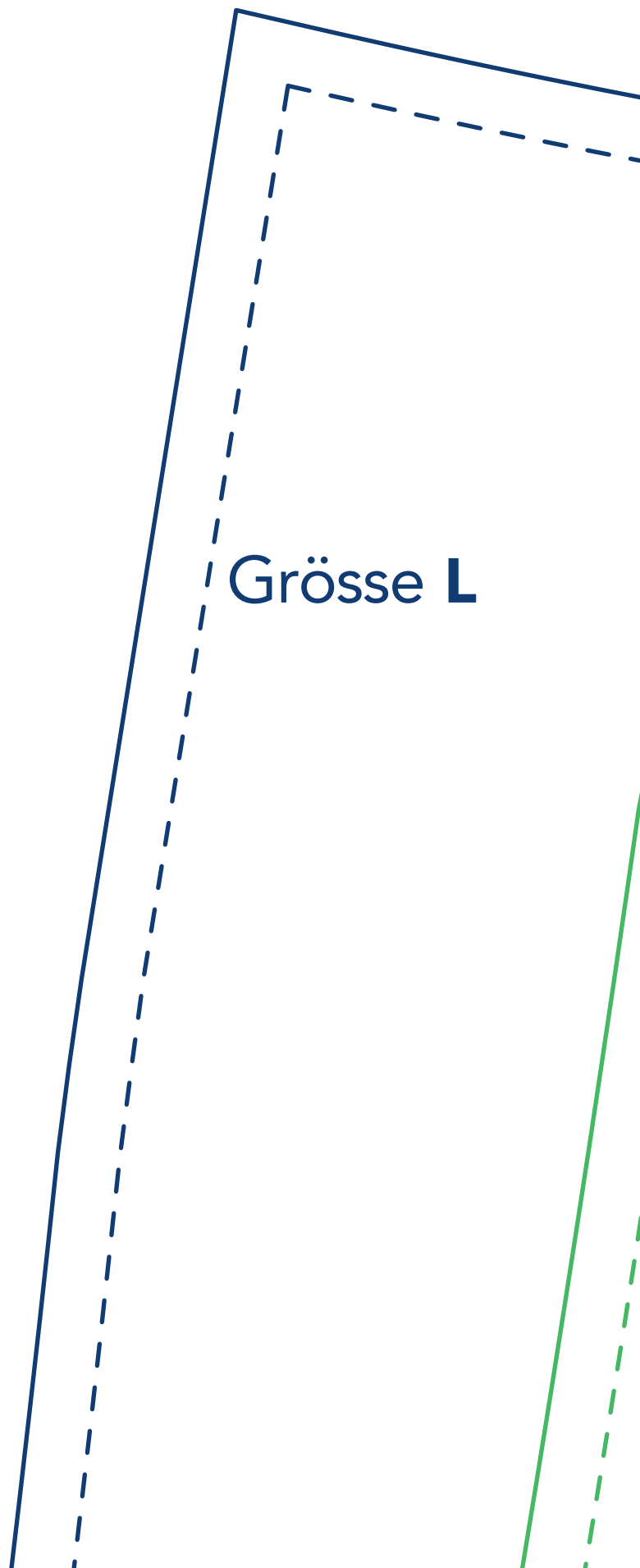
• •
• •

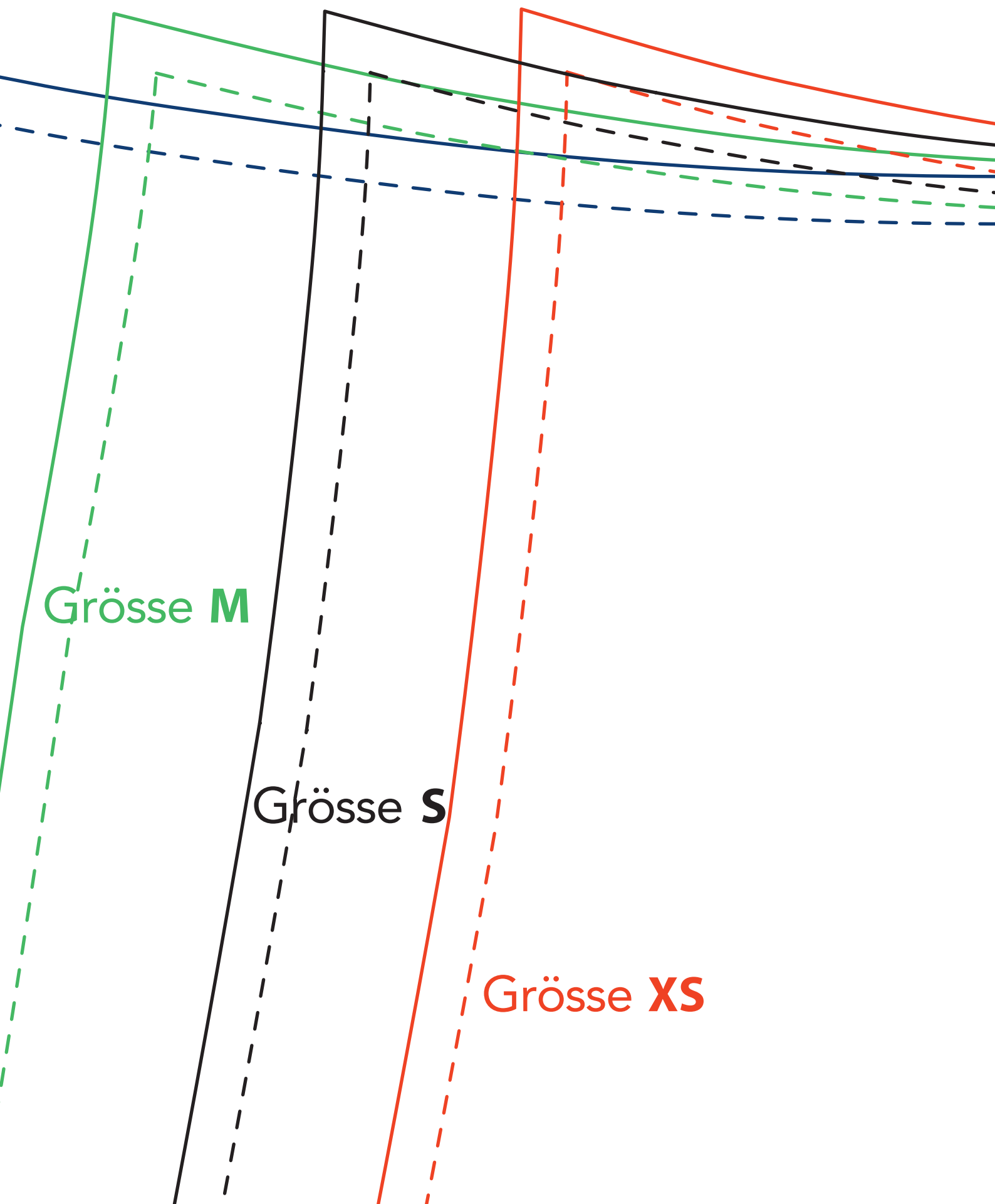


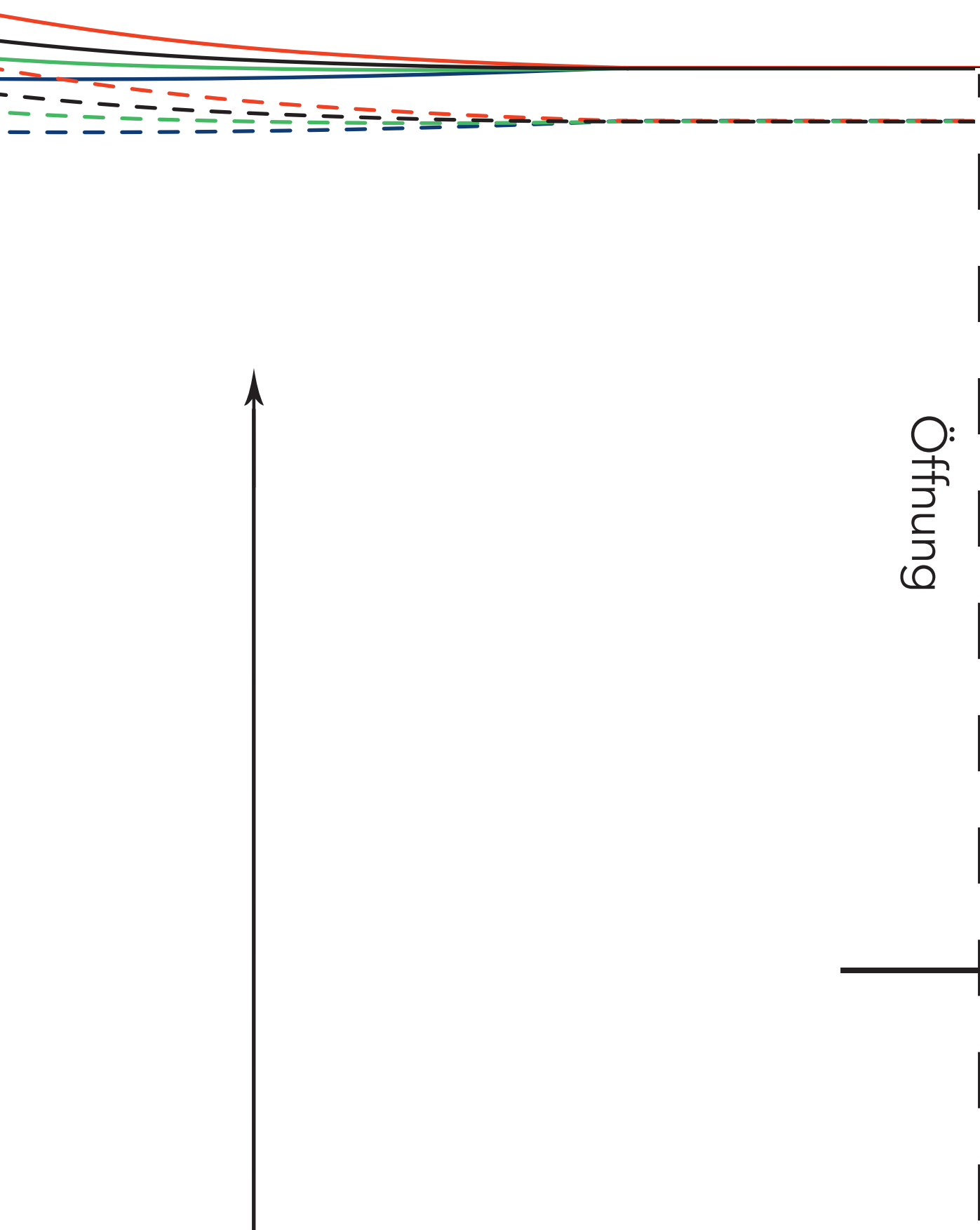


2013 Knit Kit GmbH / www.knit-kit.ch

Dieses Schnittmuster ist urheberrechtlich geschützt!







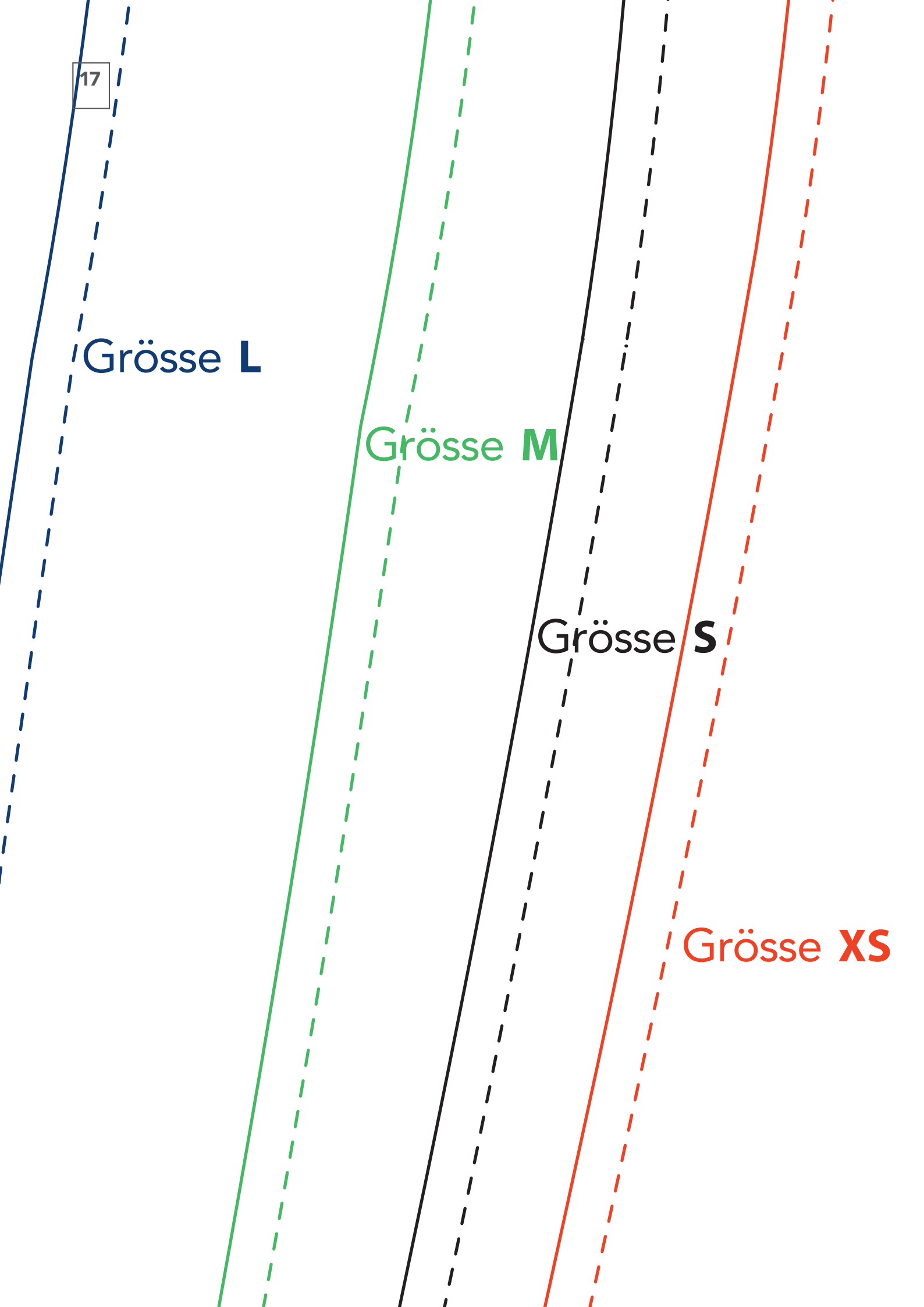


Grösse **L**

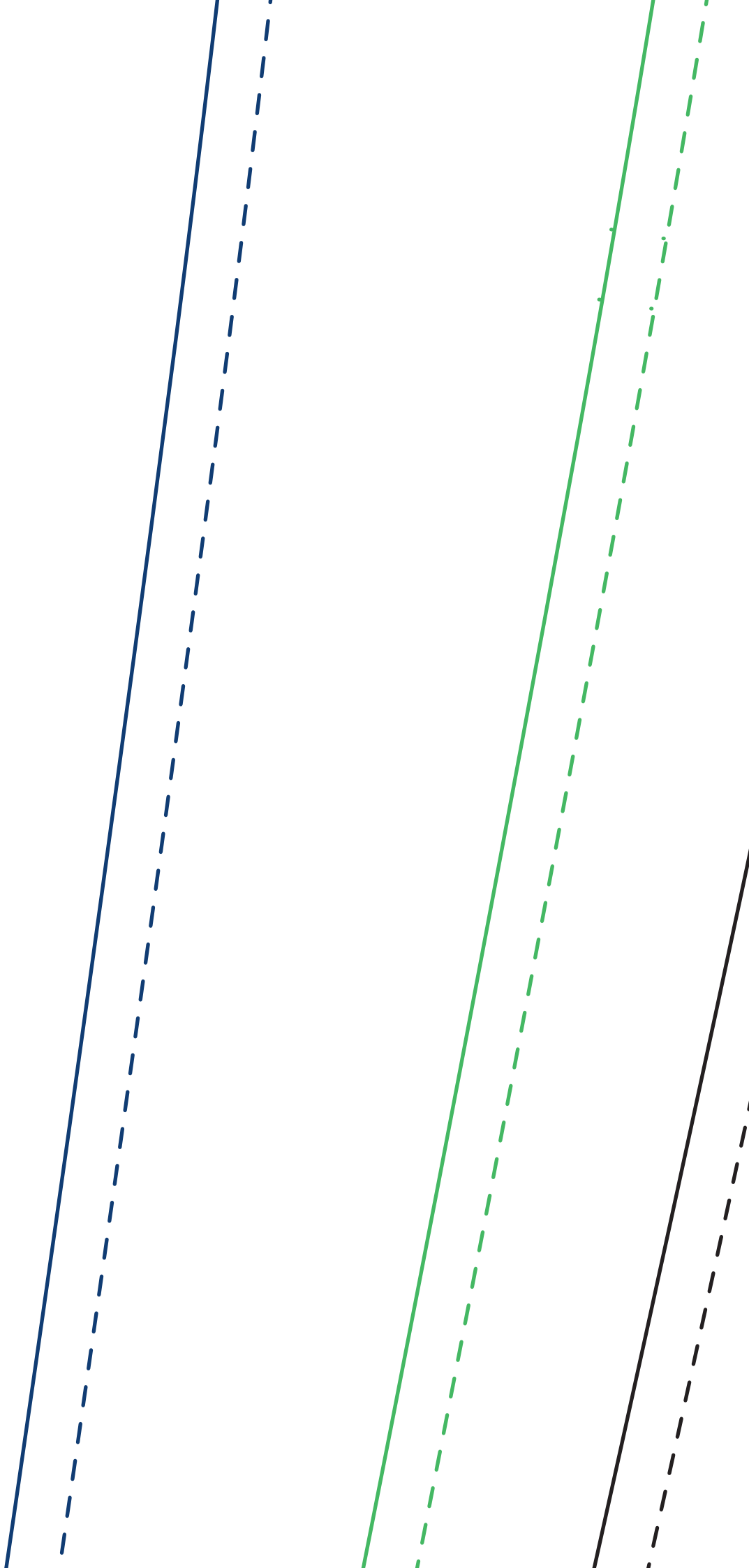
Grösse **M**

Grösse **S**

Grösse **XS**



Stoffbruch



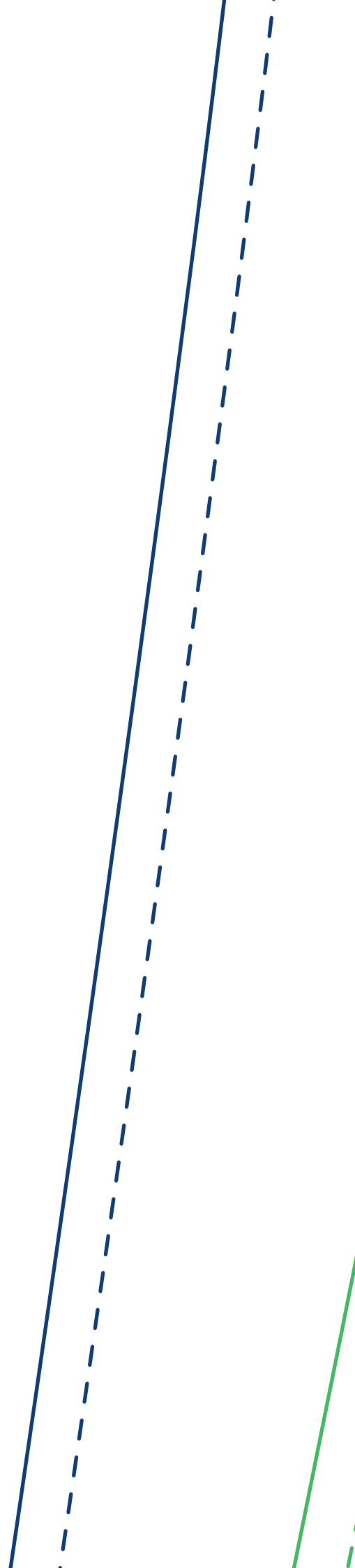


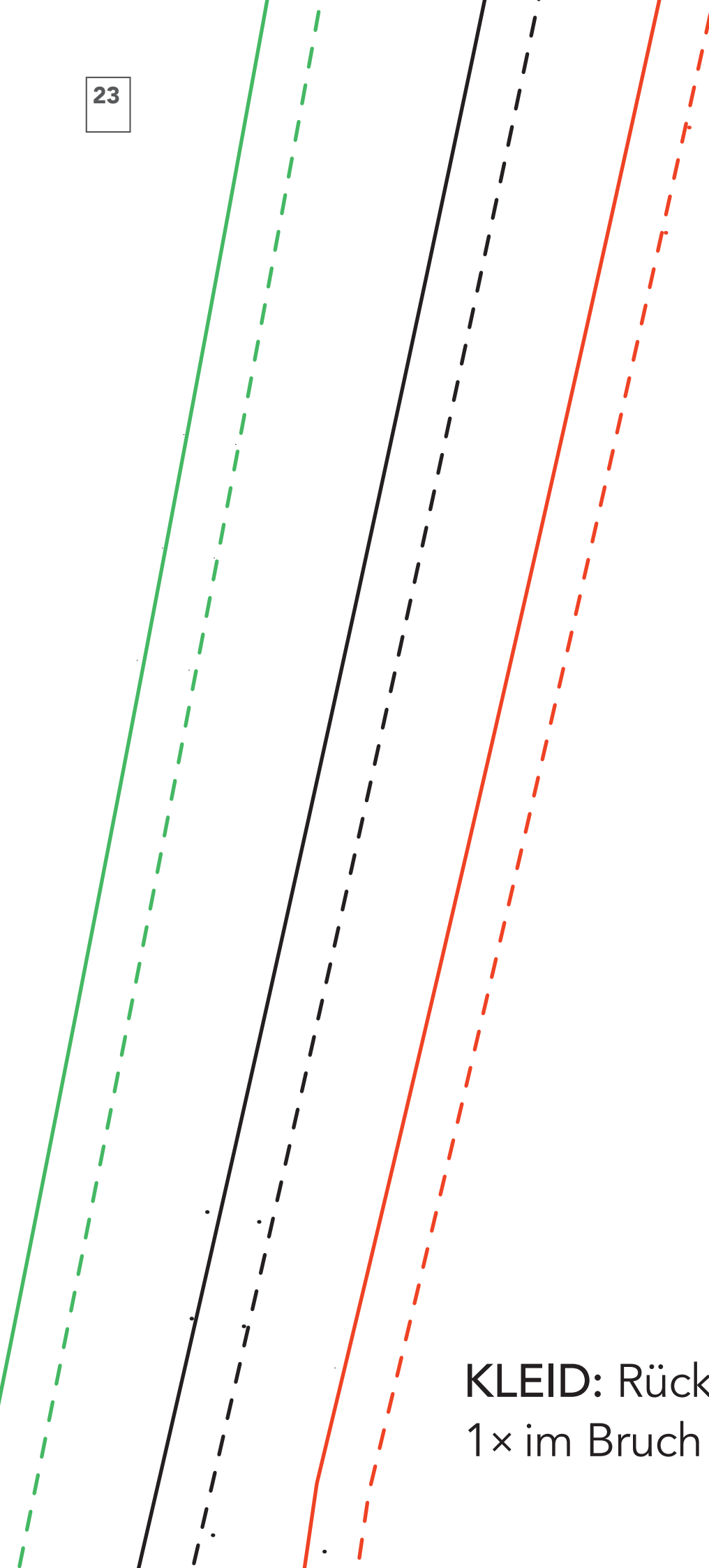
20

The image shows a technical drawing of a dress pattern piece. It consists of two pairs of parallel lines that are slanted upwards from left to right. The first pair consists of a solid black line on the left and a dashed black line on the right. The second pair consists of a solid red line on the left and a dashed red line on the right. The lines are positioned on the left side of the page, with the rest of the page being blank white space.

KLEID: Vorderes Rockteil unten
1× im Bruch zuschneiden

Stoffbruch

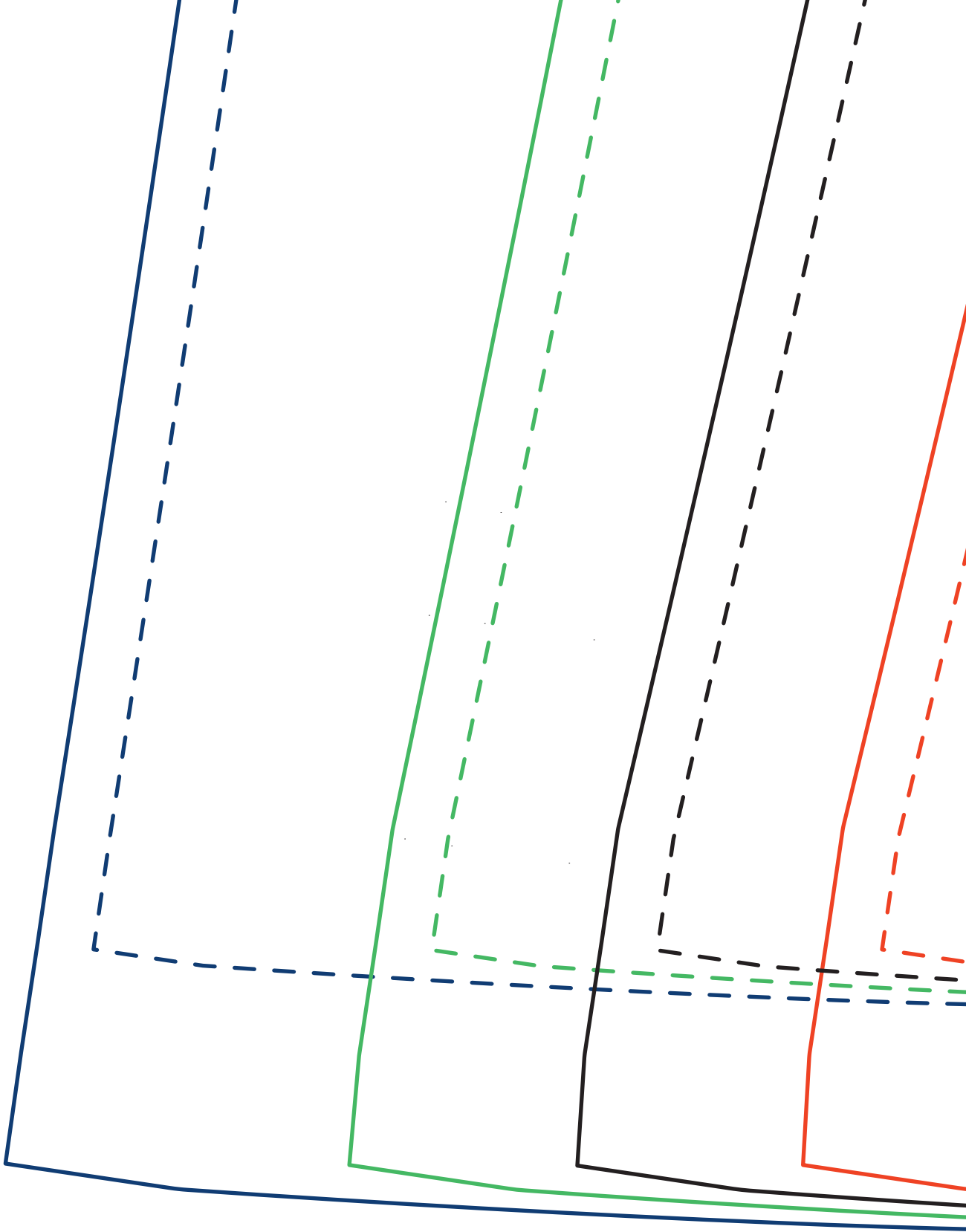




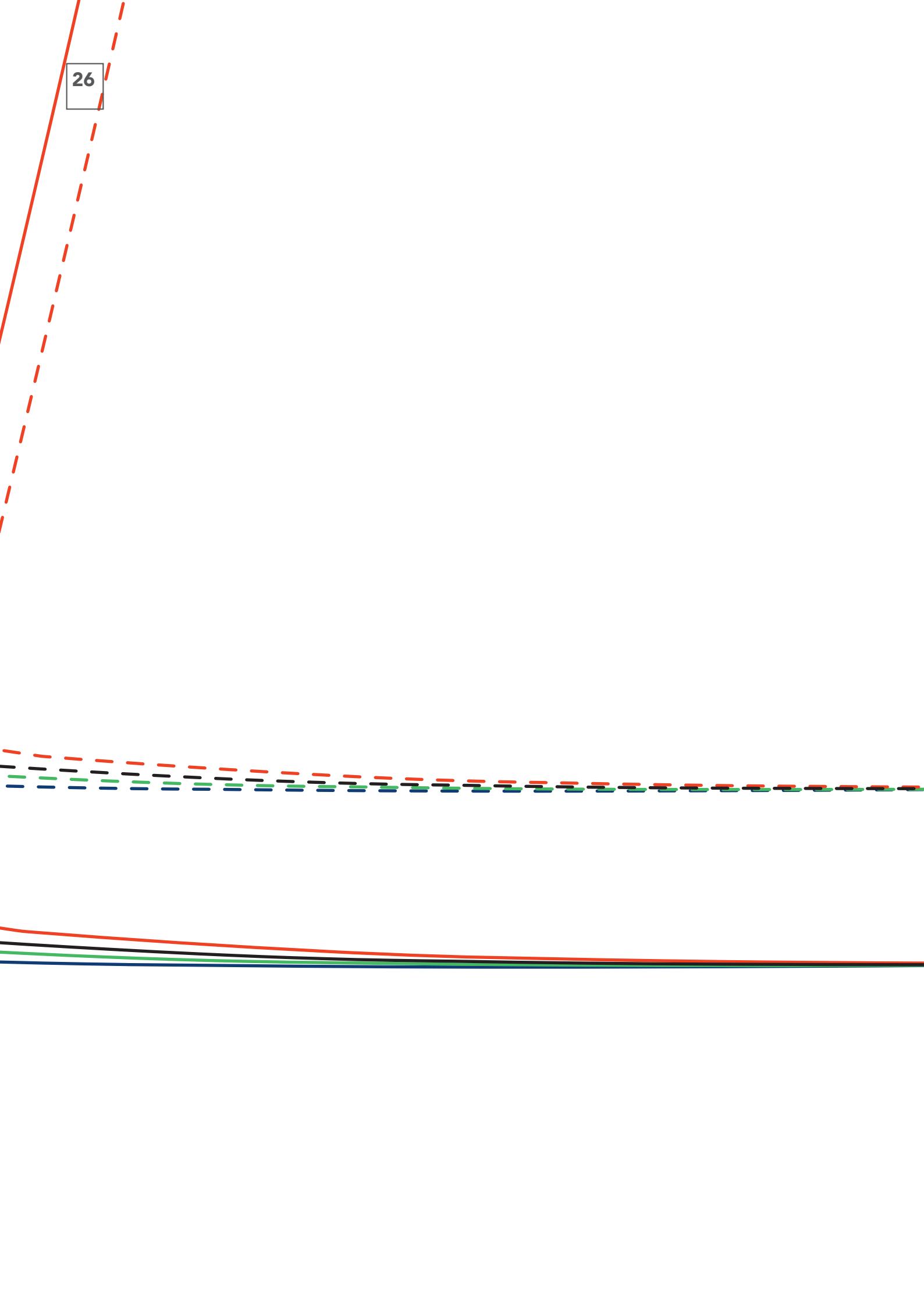
KLEID: Rückenteil
1× im Bruch zuschneiden

FADENLAUF

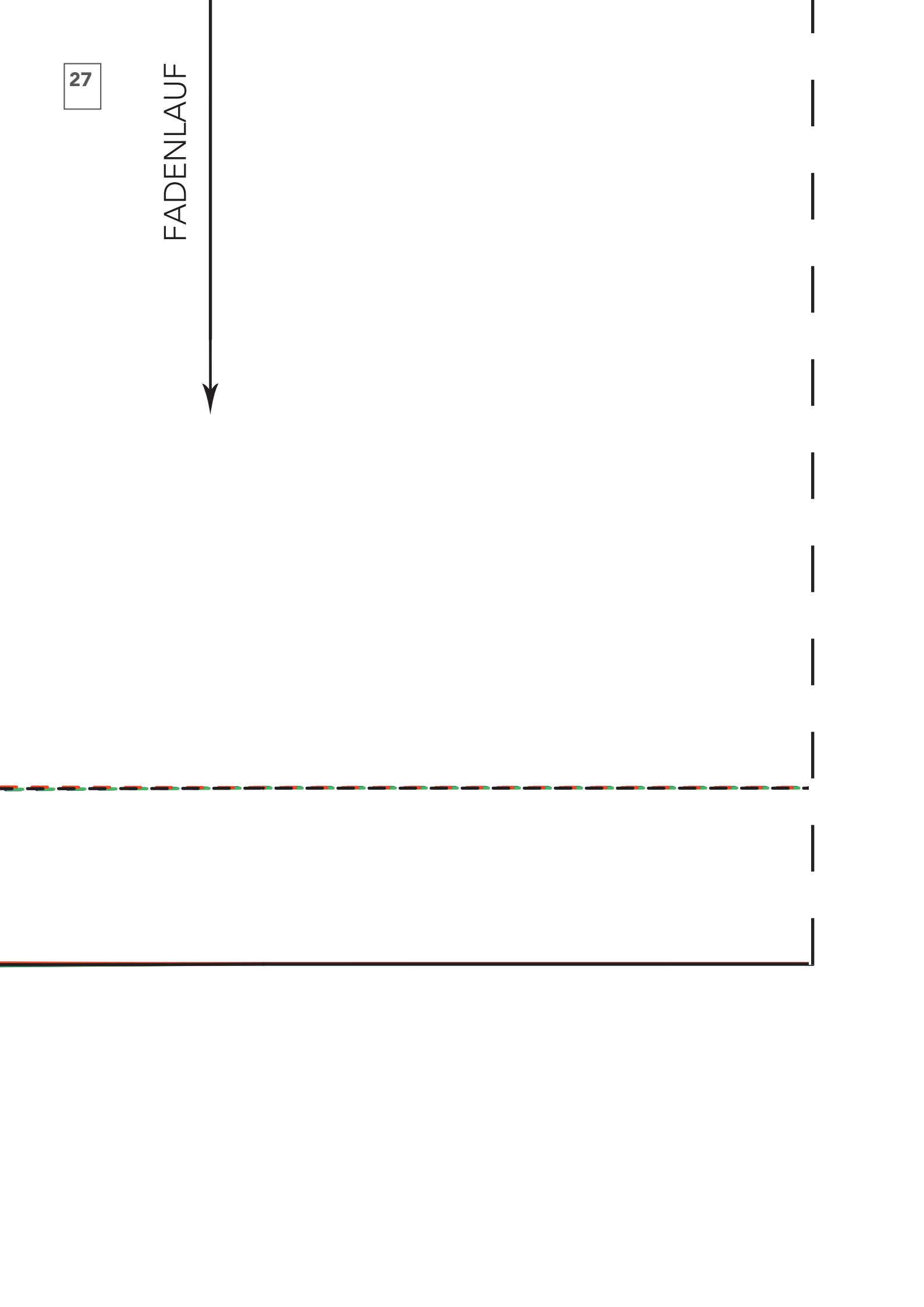


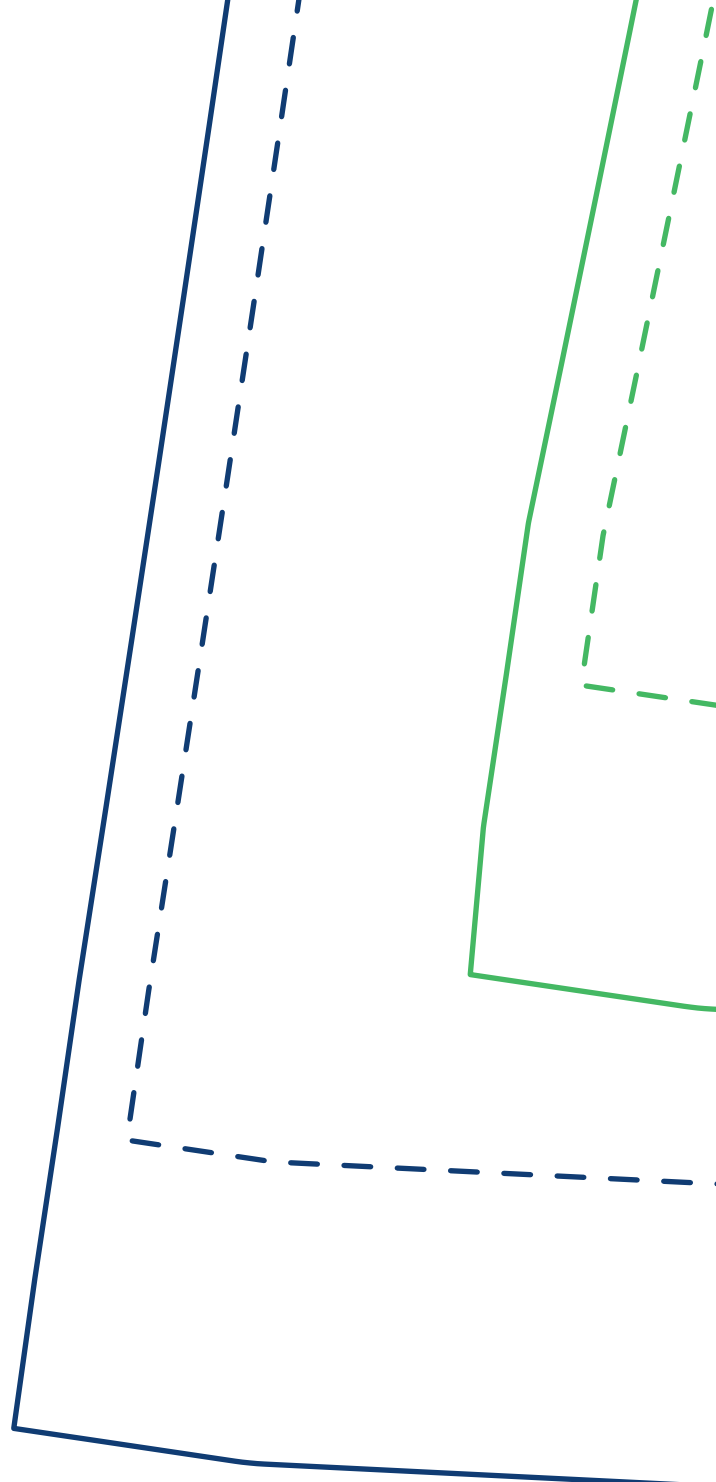


26

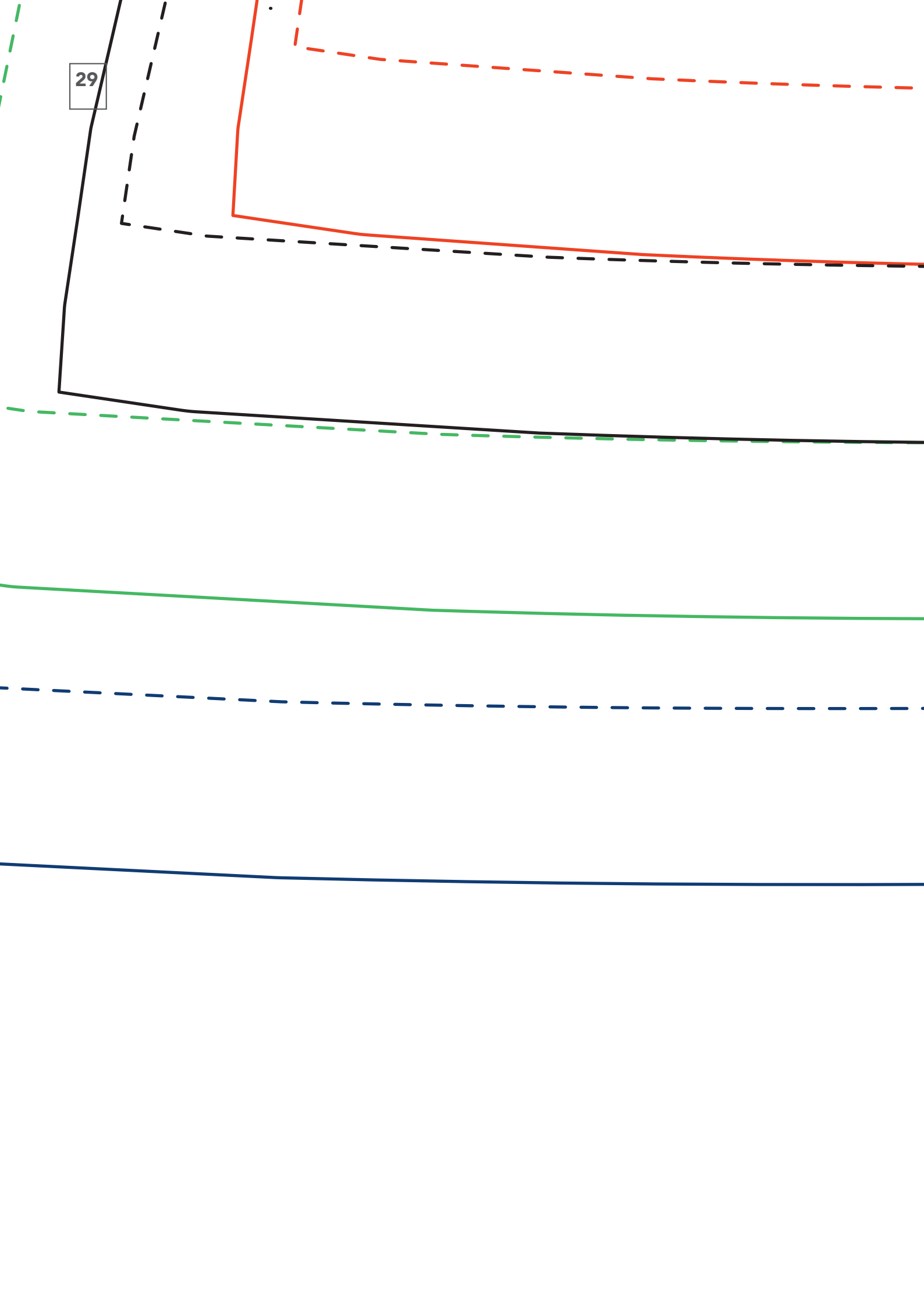


FADENLAUF





29



30

